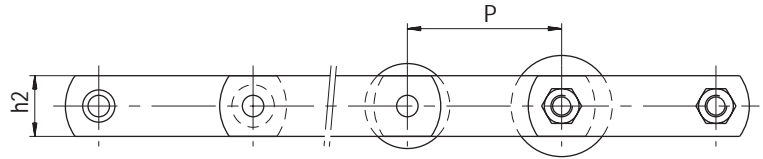


Catene a perni pieni secondo ISO 1977

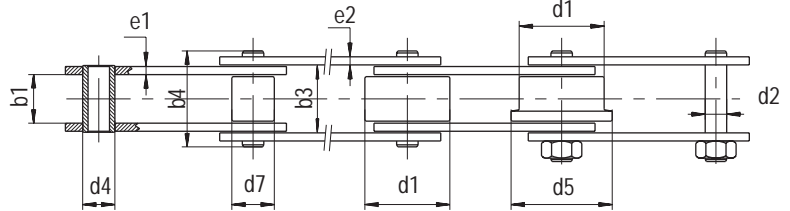
Le catene possono essere con :

- Bussole,
- Rullo piccolo,
- Rullo grande o rullo flangiato, i rulli grandi sono in acciaio trattato,



Le maglie di giunzione sono :

- maglie col dado N° 209
- maglie con copiglie N° 208



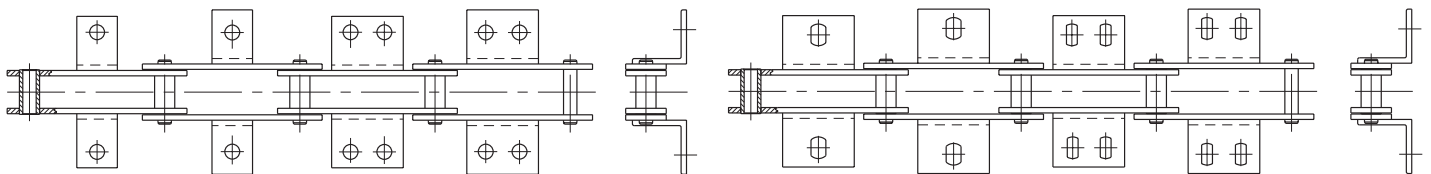
Dimensioni in mm

Riferimento	Passi normalizzati (tutti i passi intermedi possibili)													b1	b3	h2	b4	e1	e2	d2	d4	d7	d1	d5	Rr (kN)
	40	50	63	80	100	125	160	200	250	315	400	500	630												
	min.	min.	med.	max.	med.	max.	max.	max.	max.	max.	max.	max.	min.												
M 20	*													15,5	22,5	17	30,6	2,5	2,5	6	9	12,5	25	32	20
M 56			*											23,2	33,6	30	47,4	4,0	4,0	10	15	21,0	42	50	56
M 80				*										27,1	39,6	35	53,4	5,0	5,0	12	18	25,0	50	60	80
M 112					*									31,0	45,7	40	62,0	6,0	5,0	15	21	30,0	60	70	112
M 160						*								36,0	52,7	50	72,0	7,0	6,0	18	25	36,0	70	85	160
M 224							*							42,0	60,8	60	81,2	8,0	6,0	21	30	42,0	85	100	224
M 315								*						47,6	70,8	70	94,2	10,0	8,0	25	36	50,0	100	120	315
M 450									*					55,5	82,9	80	112,5	12,0	10,0	30	42	60,0	120	140	450
M 630										*				66,0	97,0	100	131,5	15,0	12,0	36	50	70,0	140	170	630
M 900											*			78,0	113,0	120	153,0	16,0	14,0	44	60	85,0	170	210	900

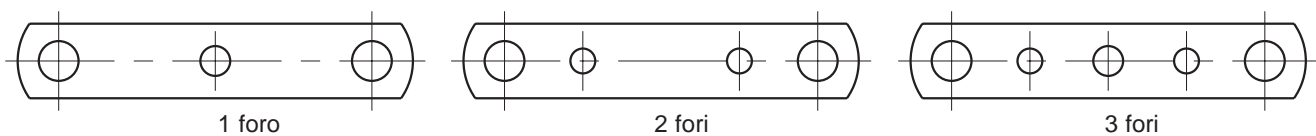
Consegna in 15 giorni con alette standard

* per catene a rulli e a bussole

Attacchi "K"



Piastre forate



**Tutte queste catene sono disponibili in :
DELTA HR, DELTA TITANIUM e DELTA VERTE.
ConsultateCi**