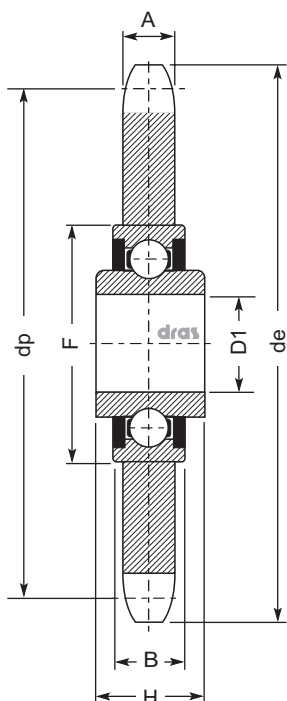


# PIGNONI TENDICATENA

## CHAIN STRETCHER SPROCKETS



### In acciaio / In steel

COD	p	Z	A	B	De	Dp	D1	F	H
AC 1	3/8"x7/32"	21	5,30	12	68	63,90	16 <sup>+0,26</sup> <sub>+0,13</sub>	40	18,30
AD1	1/2"x5/16"	10	7	8	45,2	41,10	10 <sup>+0,26</sup> <sub>+0,13</sub>	27	8
AD2	1/2"x5/16"	14	7	8	61,8	57,07	10 <sup>+0,26</sup> <sub>+0,13</sub>	27	8
AB2	1/2"x5/16"	14	7,20	12	61,8	57,07	16 <sup>+0,26</sup> <sub>+0,13</sub>	40	18,30
AC2	1/2"x5/16"	16	7,20	12	69,50	65,10	16 <sup>+0,26</sup> <sub>+0,13</sub>	40	18,30
AC3	5/8"x3/8"	17	9,10	12	93	86,39	16 <sup>+0,26</sup> <sub>+0,13</sub>	40	18,30
AC4	3/4"x7/16"	15	11,10	12	99,80	91,63	16 <sup>+0,26</sup> <sub>+0,13</sub>	40	18,30
AC5	1"x17mm	12	16,20	14	109	98,14	20 <sup>+0,01</sup> <sub>+0,00</sub>	47	17,70

p: passo / pitch      Z: n° denti / n. teeth

### In nylon / In nylon

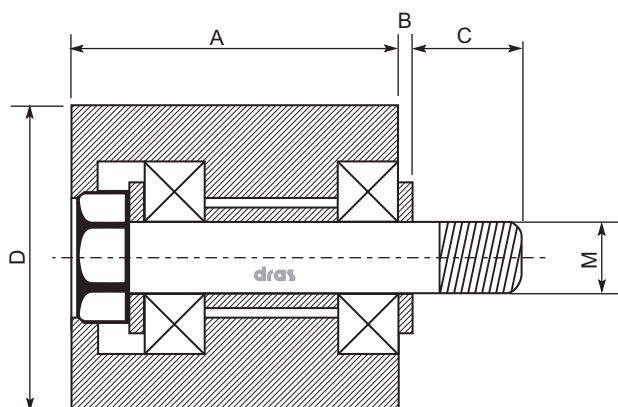
COD	p	Z	A	B	De	Dp	D1	F	H
NY 1	3/8"x7/32"	21	5,30	12	68	63,90	16 <sup>+0,26</sup> <sub>+0,13</sub>	40	18,30
NY 2	1/2"x5/16"	16	7,20	12	69,50	65,10	16 <sup>+0,26</sup> <sub>+0,13</sub>	40	18,30
NY 3	5/8"x3/8"	17	9,10	12	93	86,39	16 <sup>+0,26</sup> <sub>+0,13</sub>	40	18,30

p: passo / pitch      Z: n° denti / n. teeth

Le misure sono espresse in mm. / Dimensions are expressed in mm.

# PULEGIA CON CUSCINETTI

## PULLEY WITH BALL BEARING



### In acciaio / In steel

COD	A	B	C	D	M
NY 1	35	2,50	13	30	M8
NY 2	50	2,50	18	50	M12
NY 3	70	2,50	16	70	M12

Le misure sono espresse in mm. / Dimensions are expressed in mm.